



LIVE IN STYLE





LIVE IN STYLE

A PROJECT BY AN AWARD WINNING DEVELOPER



LIVE IN STYLE



ONE OF THE FASTEST-GROWING REAL ESTATE  
DEVELOPERS IN THE U.A.E.



**SAMANA**  
DEVELOPERS





## ABOUT SAMANA WAVES

Samana Waves is a complex of ultra-high-end residential apartments, located in the heart of Dubai, the city of dreams. Designed for those who prefer leisure, lavishness, and a bit of extravagance in life, Samana Waves features state-of-the-art apartments with spacious interior inside and breathtaking views outside. From private pools in select apartments to a leisure deck with a gigantic pool and iconic cascading water features, to indoor and outdoor gym, to sauna and steam room, to dedicated kids play area, Samana Waves offer all amenities that you can wish for a luxurious lifestyle.

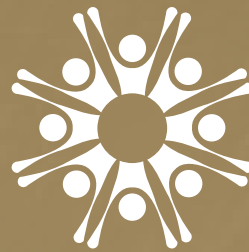


## A SAFE INVESTMENT

Dubai is rapidly becoming the hub of international trade and travel. It is among the safest cities in the world and boasts one of the fastest-growing economies in the region. The average annual return on Investment here ranges from 8 to 10 percent. Dubai's real estate market, in particular, is an ideal place to invest. It's because Dubai gives its investors one of the highest rental yields in the world, besides ensuring capital appreciation in a tax-free regime. As an ultra-high-end luxurious residential complex located in the heart of Dubai, Samana Waves present the perfect opportunity to investors to make the most out of Dubai's investor-friendly environment.

## WHY INVEST IN DUBAI

- Ranked as one of the safest and happiest cities in the world
- Average Return on Investments range between 8 and 10 percent annually
- One of the fastest growing economies in the region
- Tax free income
- Regulated property sector ensuring your investment is protected by Dubai Government



# SAMANA DEVELOPERS

## AN AWARD WINNING DEVELOPER

**Samana Developers** is a part of the business conglomerate Samana Group of Companies which is headquartered in Dubai and has a truly global presence. The group comprises of over 10 internationally recognized companies all of which strive to deliver the highest quality of service accompanied with sincere professionalism.

Samana Developers broke ground in the property development industry with its first project Samana Greens in September of 2018 in the heart of Arjan, Dubai and has successfully been delivered. On the success of Samana Greens, Samana Hills was launched in March 2018 and is on-track for handover with the Samana fast-track construction strategy. Samana Greens completed the main structure within just 8 months and Samana Hills has seen record breaking construction progress. Samana Golf Avenue launched on March 2021, with its fast progress Samana developers completed 20% of construction by Sep 2021, Golf Avenue is on fast track & scheduled to hand over by Dec 2022. Samana park views is a newly launched project featuring luxury experience with stunning private pool apartments. The project is expected to be completed by 2024. The track-record of Samana Developers which has proven to show that the developments are on time, every time has been recognized internationally and the commitment to delivery and a transparent approach has been acknowledged with numerous awards.

Samana Developers is one of the fastest growing private developers in the country with their focus being on delivering the promise to each and every customer of a quality product at an appropriate price point that maximizes the returns for investors. At Samana, we never compromise on quality, service and delivery. Our motto "**On Time, Every Time.**"

## MEDIA



# AWARDS & RECOGNITIONS

DESIGN MIDDLE  
EAST AWARD



SUSTAINABLE PROJECT  
OF THE YEAR AWARD



EMERGING CEO OF  
THE YEAR AWARD



EXCELLENCE IN  
AFFORDABLE  
LUXURY IN  
REAL ESTATE  
AWARD 2020



# AWARDS & RECOGNITIONS



# CEO MESSAGE

As stated in the "**Samana Way**" which is our trade philosophy, the mission of Samana Group of Companies is to endeavor for wholehearted satisfaction of our clients and exceptional services. Our mission is to provide innovative ideas and distinguished services to our clients.

Samana Developers has strived to build a reputation for delivering premium high quality properties that earn our investors a healthy return. As we continue to craft and deliver iconic developments that redefine luxury living, we are progressively enhancing our offerings using advanced technology combined with strong project execution. We take pride in our ability to work closely with clients and to address and meet individual needs.

We are responsive to our clients needs and understand how important each situation is. Every day we work diligently towards the realization of our goal to provide best of the services to our clients and of becoming a developer with a global presence. A statement that we standby is "**On Time, Every Time**"

Imran Farooq



# OUR PROJECTS



Samana Greens in Arjan, Dubai, is the first real estate project from Samana Developers.

by Oscar Rousseau: 07 Feb 2019

The superstructure of Samana Greens, a G+4 apartment complex, has been completed by Dubai-based Samana Developers, which is targeting a February 2020 handover for its maiden project.

*Samana  
Greens*

**STARTED**  
SEPT, 2018

**100 % STRUCTURE**  
OCT, 2020

**HANDOVER**  
DEC, 2020

# OUR PROJECTS



## SAMANA *Hills*

**STARTED**  
MAR, 2018

**100 % STRUCTURE**  
AUG, 2020

**HANDOVER**  
MARCH, 2022



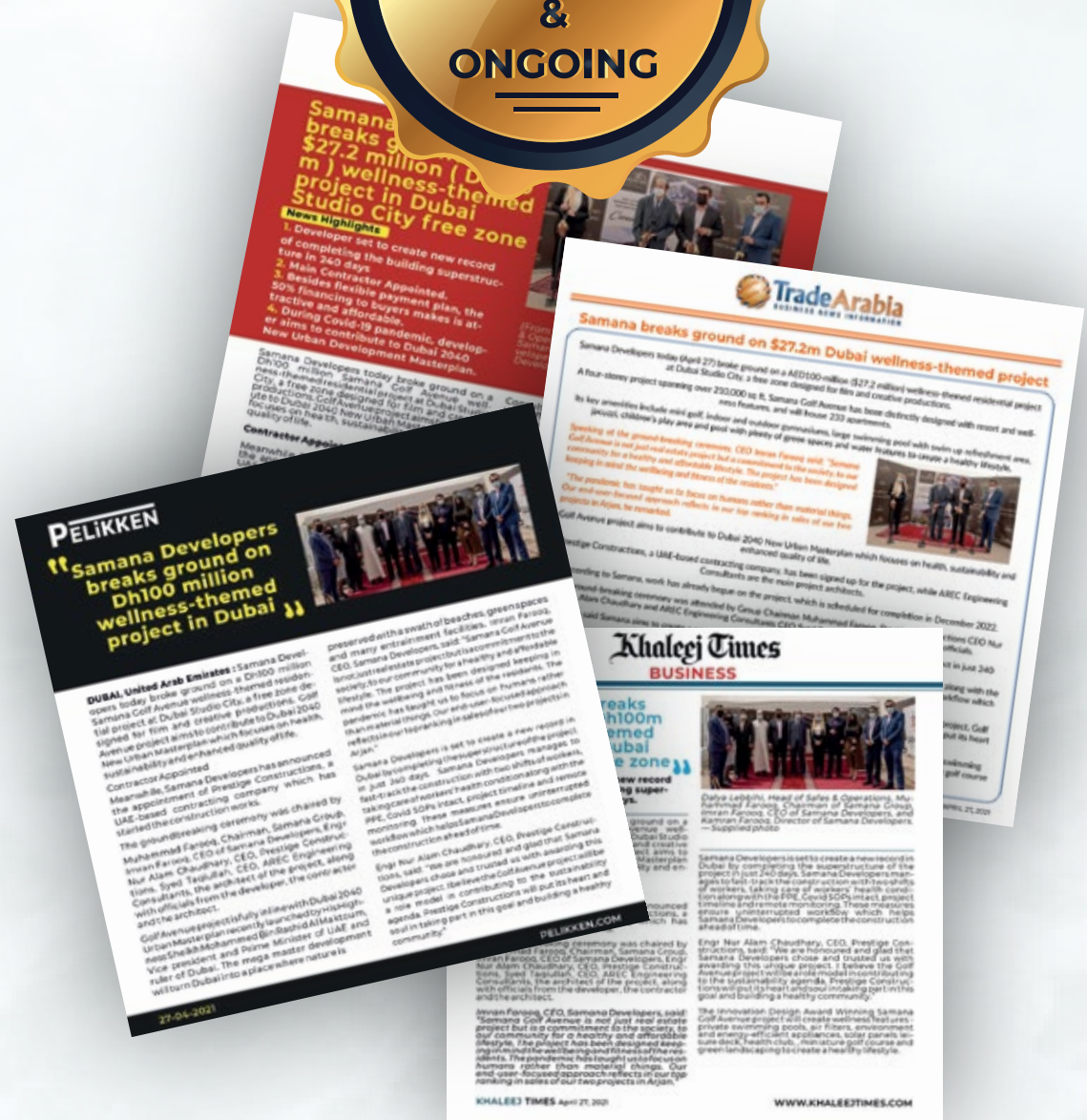
# OUR PROJECTS



**STARTED**  
MAR, 2021

**100% SUPERSTRUCTURE**  
COMPLETED

**HANDOVER**  
DEC, 2022



# OUR PROJECTS



Park Views

LAUNCHED  
OCT, 2021



HANDOVER  
APRIL, 2024

# HIGH-END RESIDENTIAL APARTMENTS

Samana Waves offers 213 ultra-high-end residential apartments in Jumeirah Village Circle. Featuring duplex style living, private pools, fully functional health club and water features, you can find everything you could ever desire for a luxurious lifestyle in Dubai.



## LIVE IN STYLE

**Samana Waves** luxury ambiance embodies a smart lifestyle, a lobby that gives the impression of grandeur and extravagance, and panoramic elevators that bring you up to any of the 26 floors. With a gigantic pool, cascading water features, and a breath-taking leisure deck, this exudes elegance throughout its structure and style.



## WORLD CLASS AMENITIES

Samana Waves does not just provides everything that you'll need for a luxurious lifestyle, it provides all of them in style. All the amenities offered by us are of a class-leading size and have the best features. For instance, our premium amenities include:

- ★ A luxurious and large Leisure Pool Deck
- ★ A spacious Kids Play Area
- ★ A Main Pool accompanied with Water Features
- ★ Private pools inside apartments
- ★ Full Health Club
- ★ Indoor & Outdoor Gym + Sauna & Steam Room



KIDS SWIMMING  
POOL



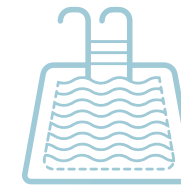
LEISURE  
POOL DECK



GREEN  
AREA



SWIMMING  
POOL



PRIVATE  
SWIMMING POOL



HEALTH  
CLUB



KIDS  
PLAY AREA



ICONIC  
WATER FEATURE



JACUZZI



STEAM  
ROOM



VALET  
PARKING

















# EASY ACCESS TO ALL FACILITIES

Situated just next to Sheikh Mohammad Bin Zayed road, near Dubai International Stadium, Samana Waves has everything needed for everyday life nearby.

## WHAT'S IN YOUR NEIGHBOURHOOD?

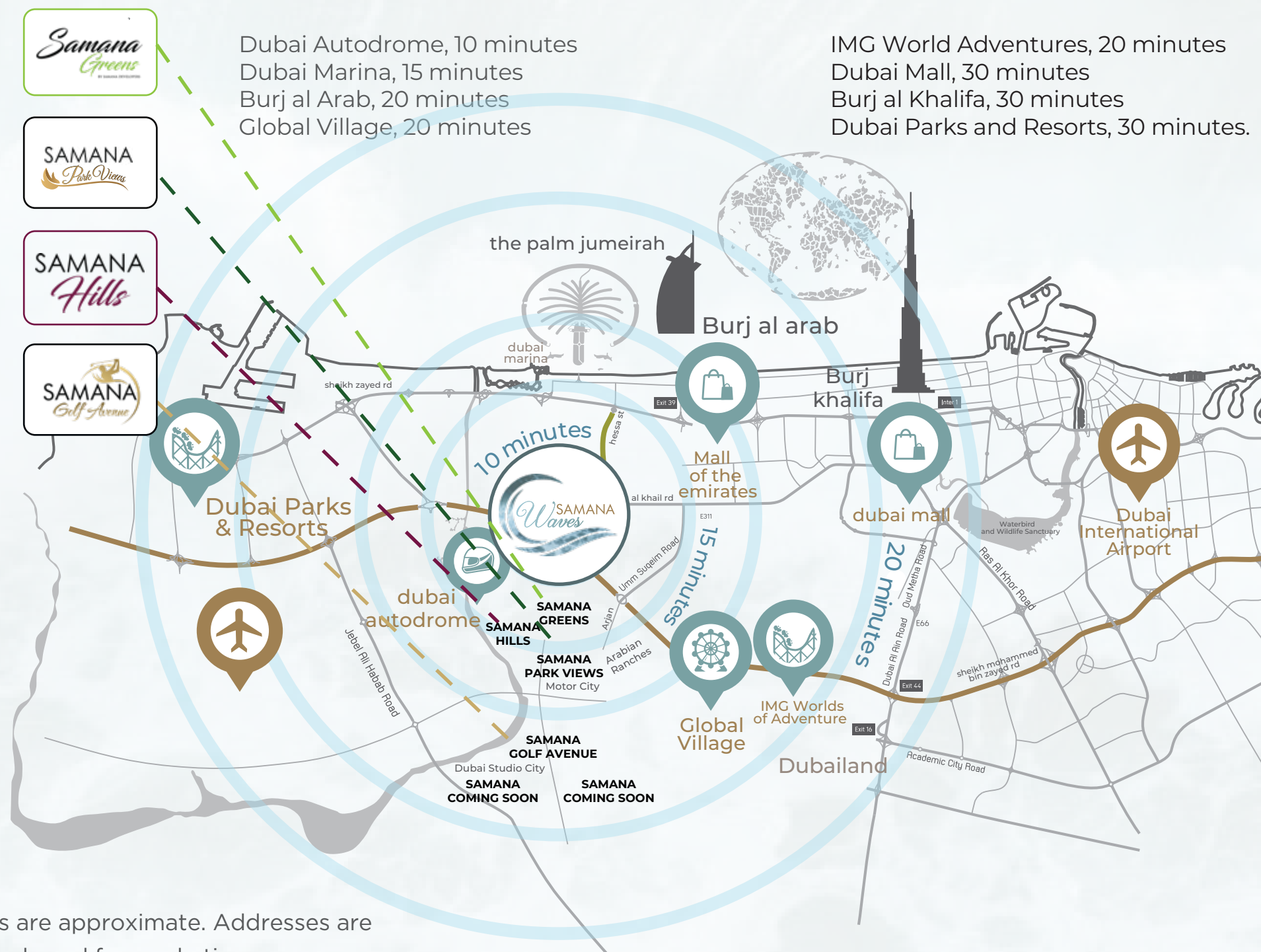
-  SCHOOL
-  MEDICAL FACILITY
-  CONVENIENCE STORE
-  DIRECT ACCESS TO MAIN HIGHWAY
-  SHOPPING CENTRE
-  GOLF COURSE



\*All distances are approximate. Addresses are indicative and used for marketing purpose.

# OUR STRATEGIC LOCATION IS EVERYTHING

Samana Waves is located in Jumeirah Village Circle – just in the heart of Dubai. Here's how long it will take you to get to some of the most famous landmarks in Dubai from Samana Waves:



\*All distances are approximate. Addresses are indicative and used for marketing purpose.































## UNIT LAYOUTS

## STUDIO - TYPE 01



NET AREA

400 ft<sup>2</sup>



FLOOR PLANS  
AND TYPICAL APARTMENTS

## STUDIO - TYPE 02



NET AREA

435 ft<sup>2</sup>

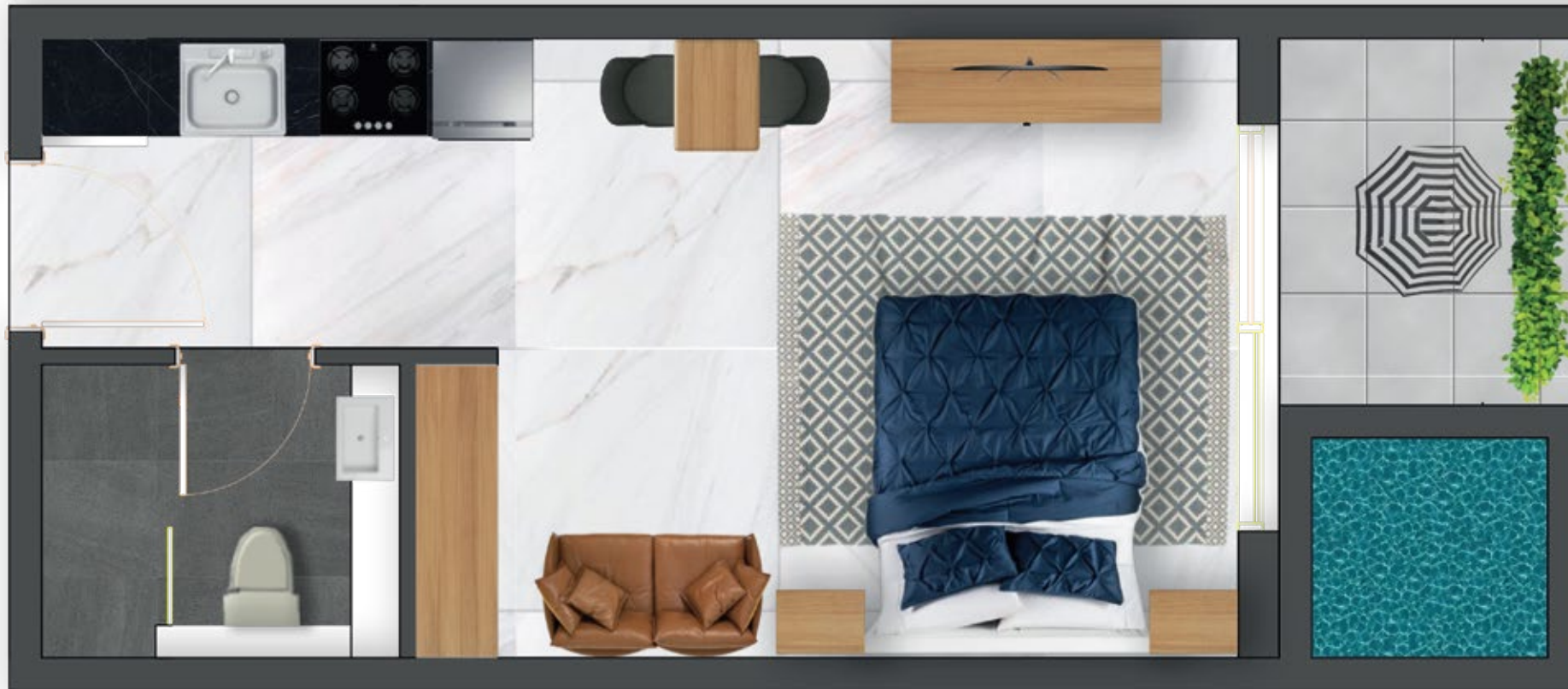


FLOOR PLANS  
AND TYPICAL APARTMENTS

# STUDIO



## STUDIO WITH PRIVATE POOL

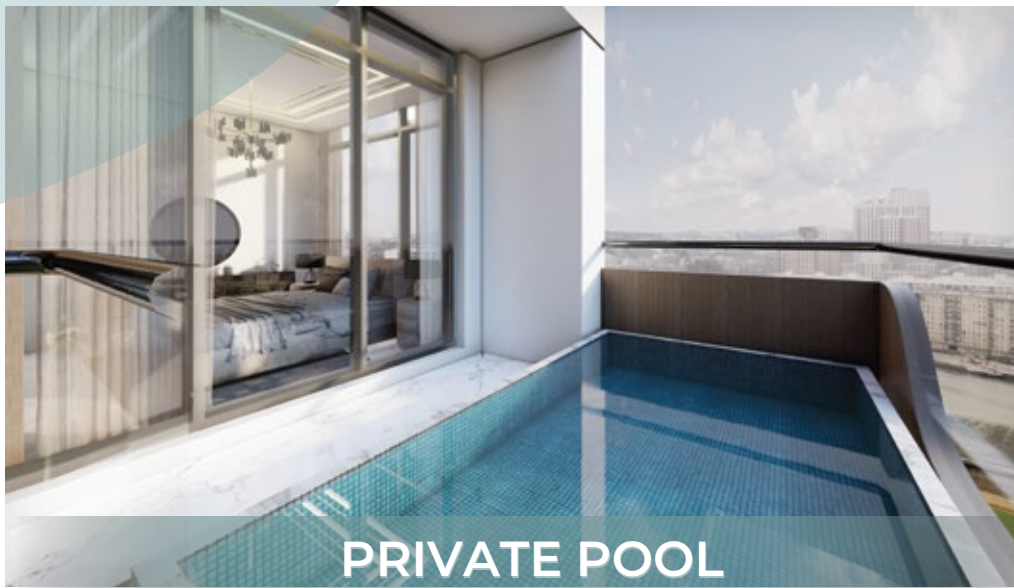


NET AREA

420 ft<sup>2</sup>



FLOOR PLANS  
AND TYPICAL APARTMENTS



PRIVATE POOL



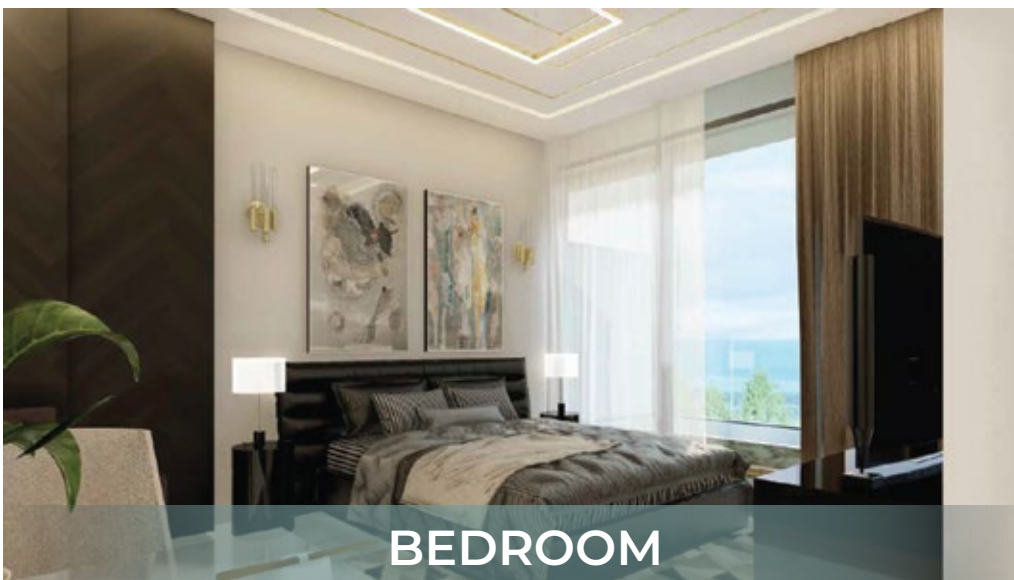
LIVING ROOM



KITCHEN



DINING AREA



BEDROOM



BATHROOM

STUDIO  
WITH PRIVATE POOL

# 1 BEDROOM



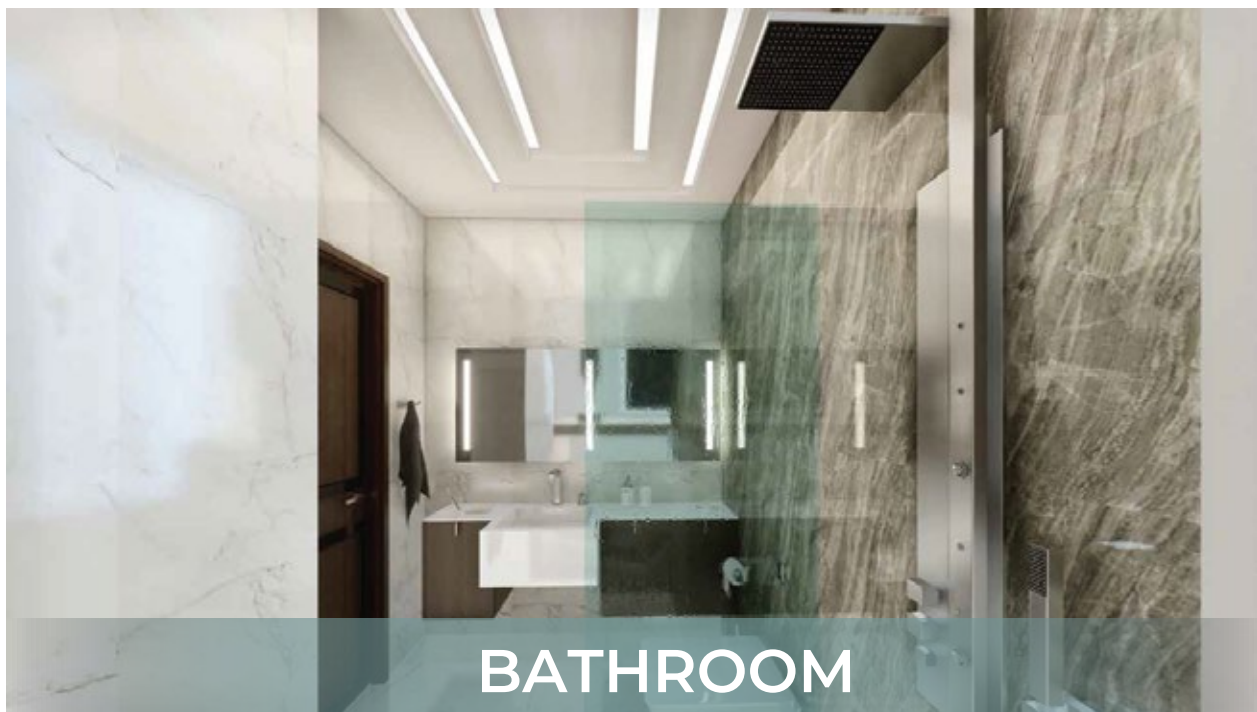
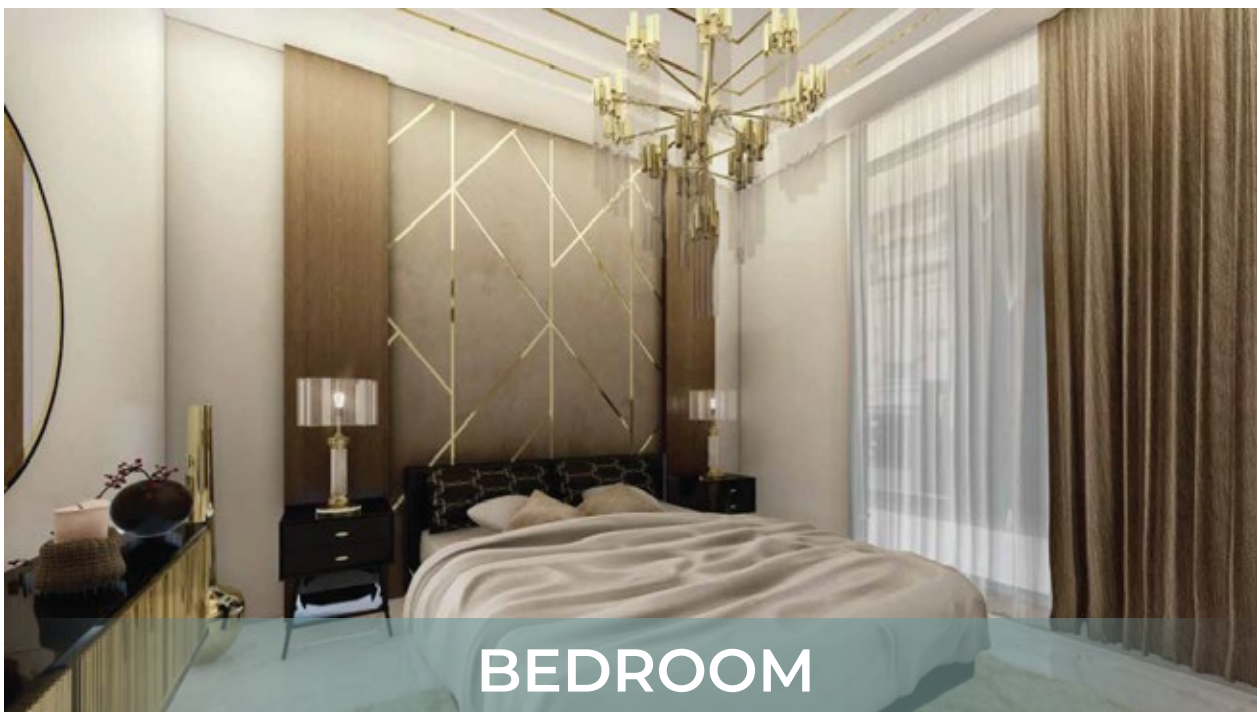
NET AREA

700 ft<sup>2</sup>



FLOOR PLANS  
AND TYPICAL APARTMENTS

# 1 BEDROOM



## 1 BEDROOM WITH PRIVATE POOL



NET AREA

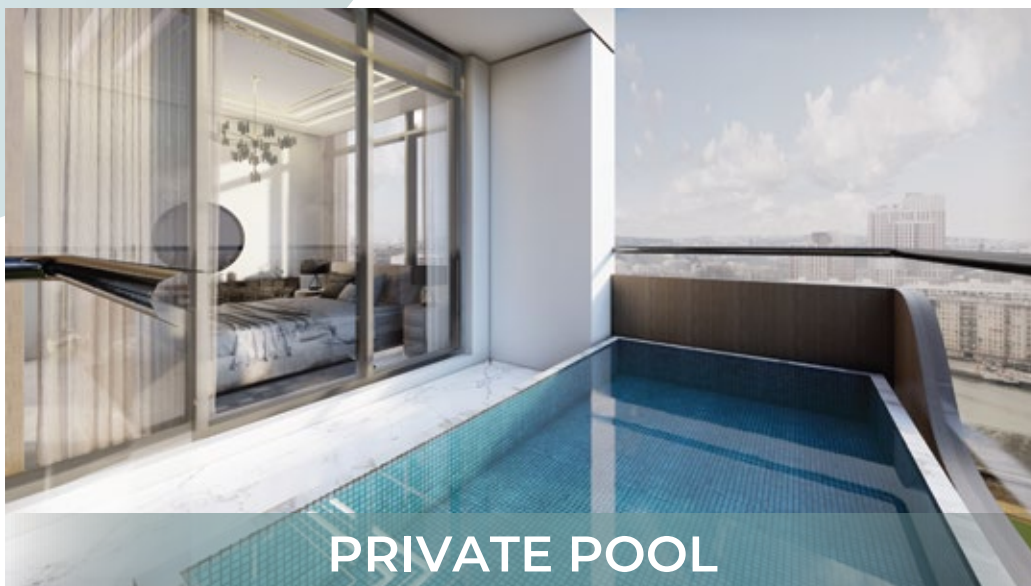
698 ft<sup>2</sup>



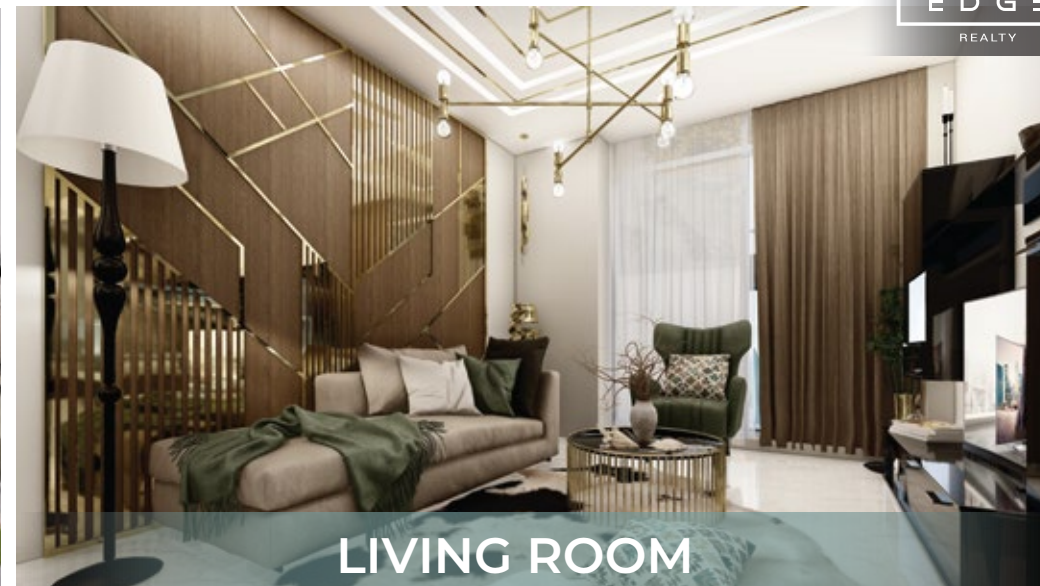
FLOOR PLANS  
AND TYPICAL APARTMENTS



1 BEDROOM  
WITH PRIVATE POOL



PRIVATE POOL



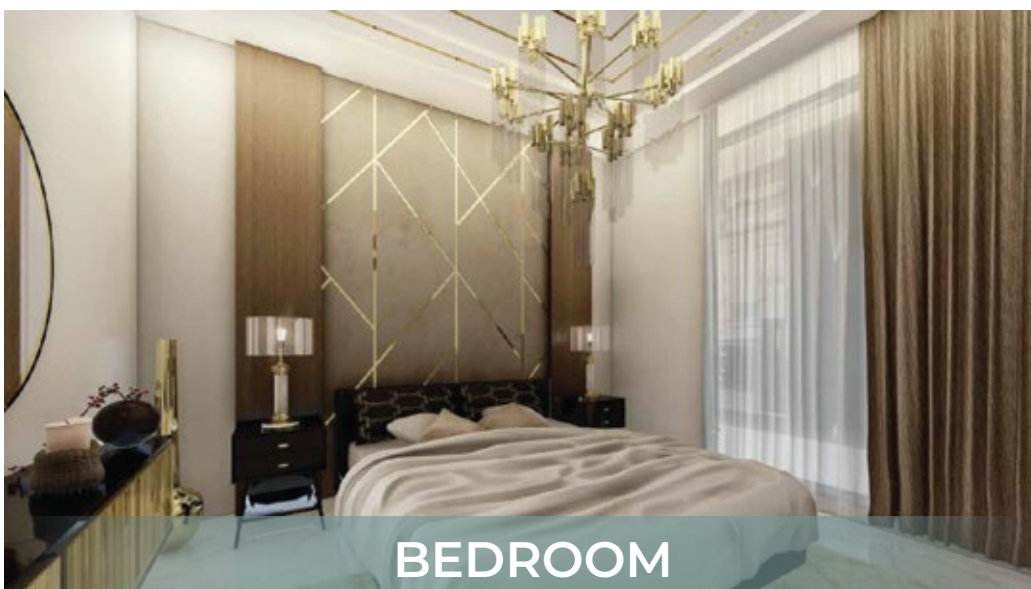
LIVING ROOM



KITCHEN



DINNING AREA



BEDROOM



BATHROOM

# 1 BEDROOM DUPLEX WITH PRIVATE POOL

LEVEL 1



LEVEL 2



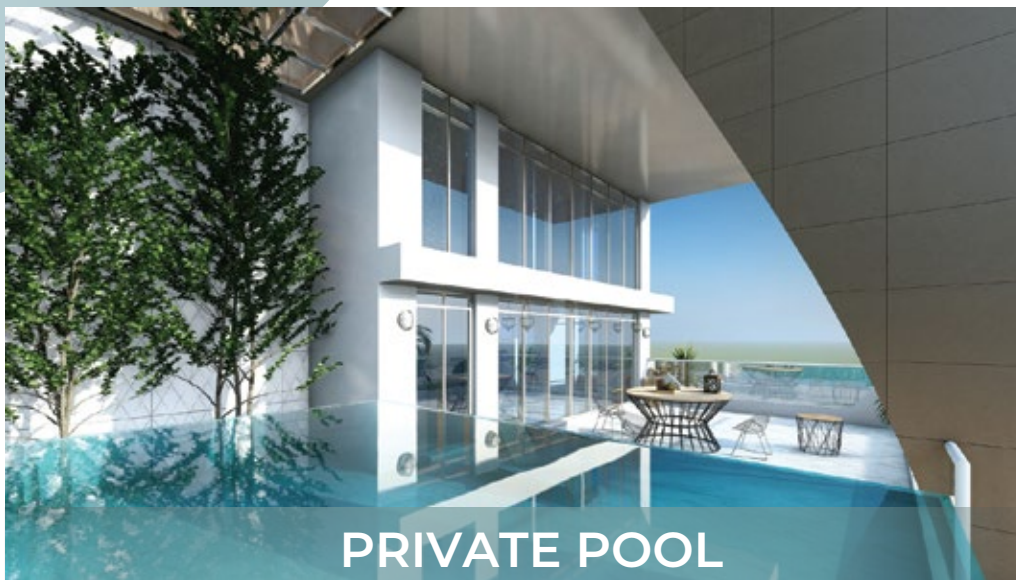
NET AREA

1,041 ft<sup>2</sup>



FLOOR PLANS  
AND TYPICAL APARTMENTS

1 BEDROOM DUPLEX  
WITH PRIVATE POOL



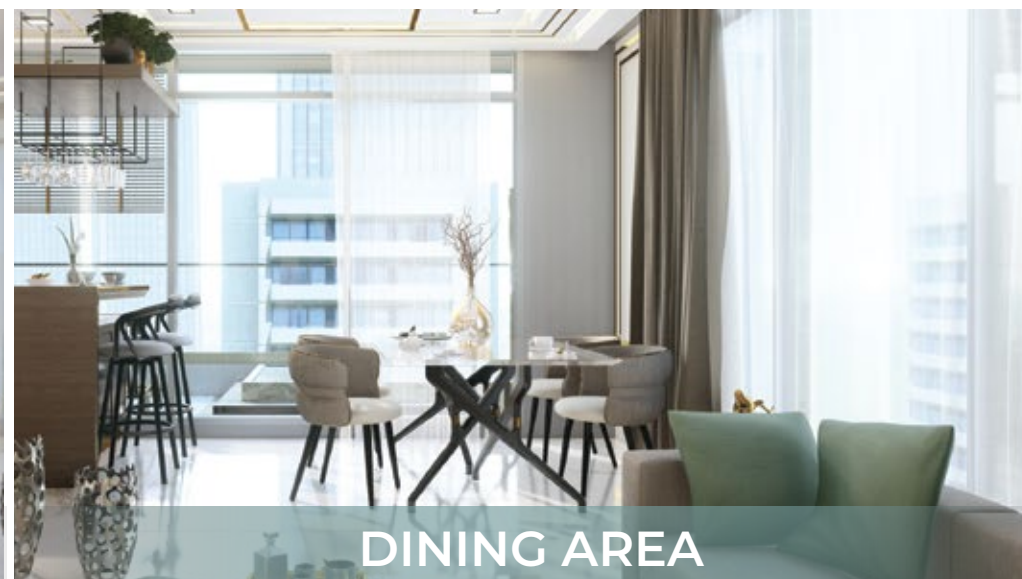
PRIVATE POOL



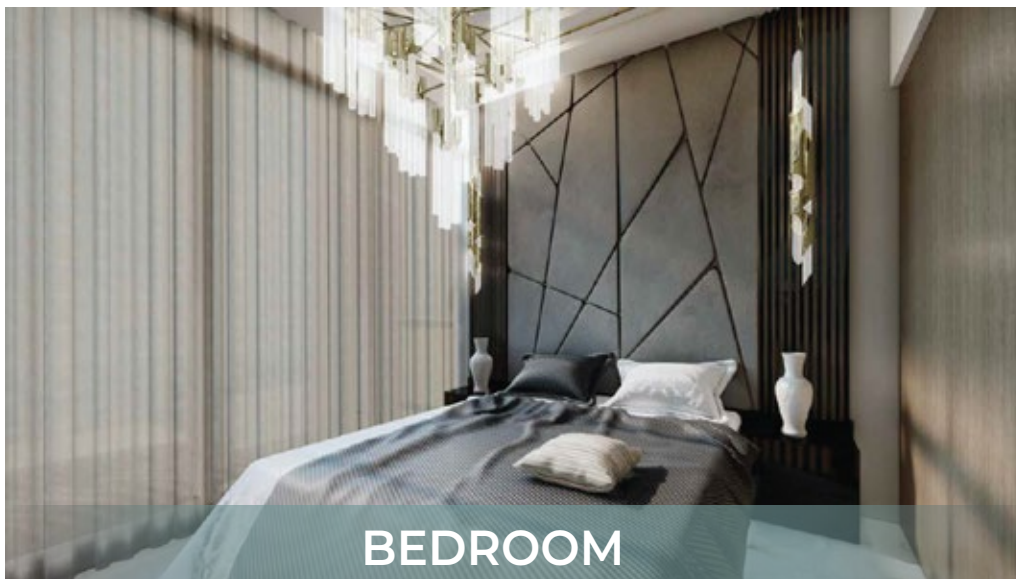
LIVING ROOM



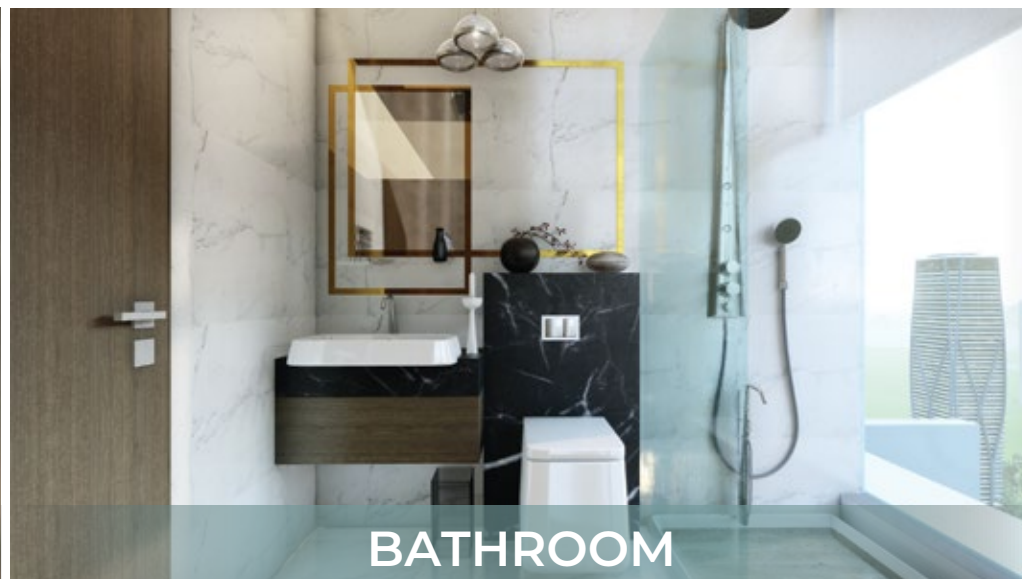
KITCHEN



DINING AREA



BEDROOM



BATHROOM

## 2 BEDROOM WITH PRIVATE POOL



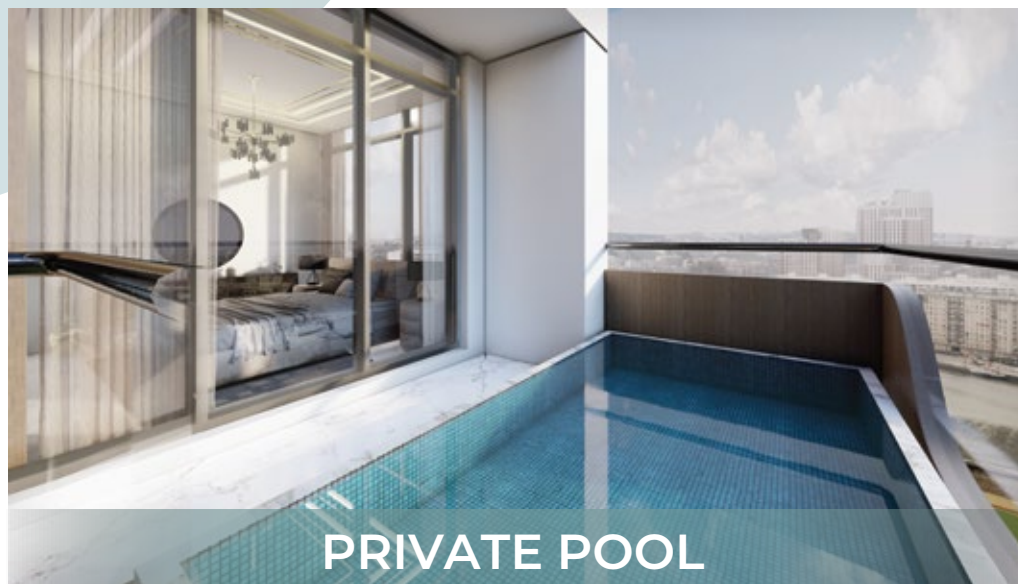
NET AREA

1286 ft<sup>2</sup>

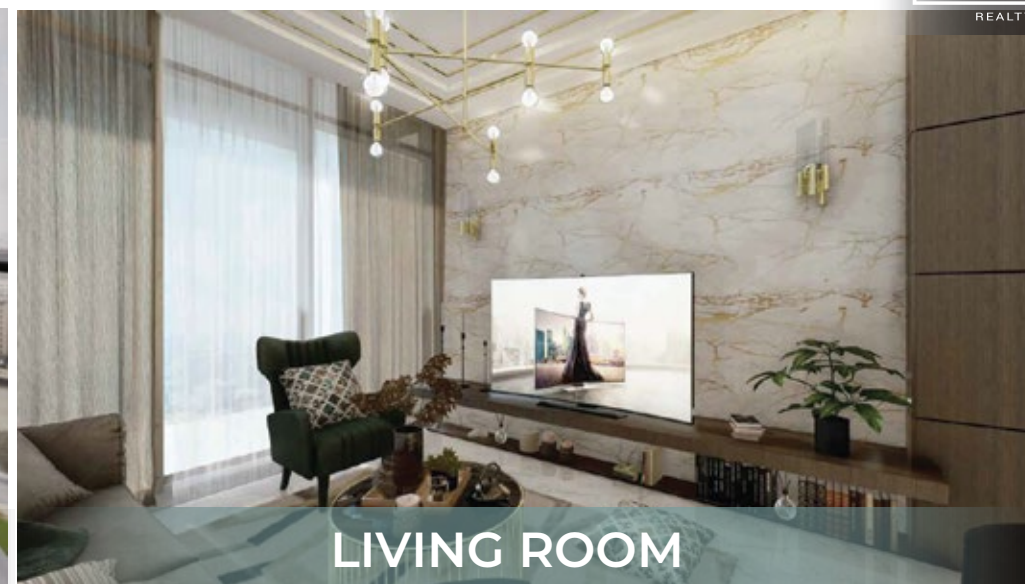


FLOOR PLANS  
AND TYPICAL APARTMENTS

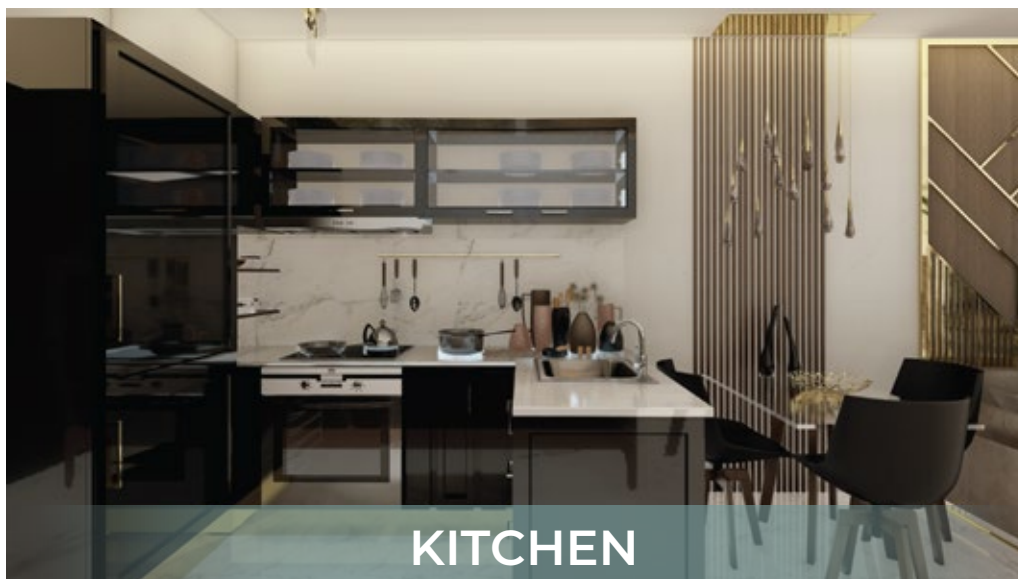
2 BEDROOM  
WITH PRIVATE POOL



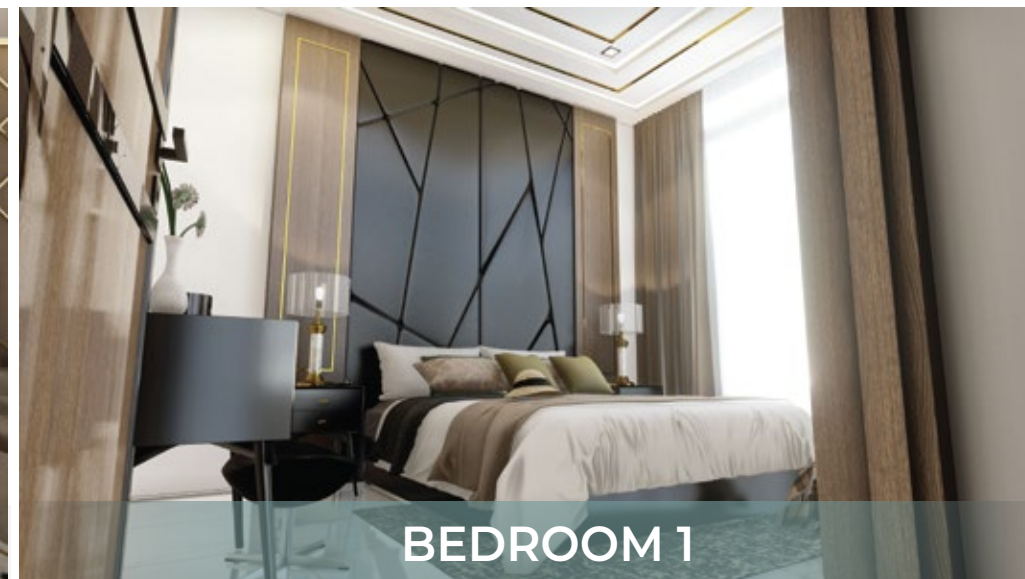
PRIVATE POOL



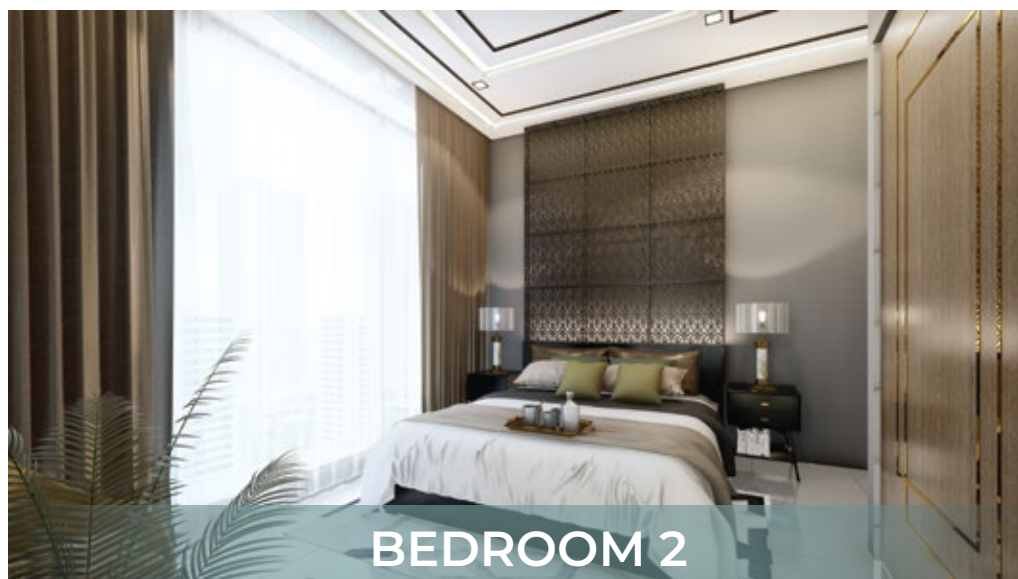
LIVING ROOM



KITCHEN



BEDROOM 1



BEDROOM 2



BATHROOM

# 2 BEDROOM DUPLEX WITH PRIVATE POOL



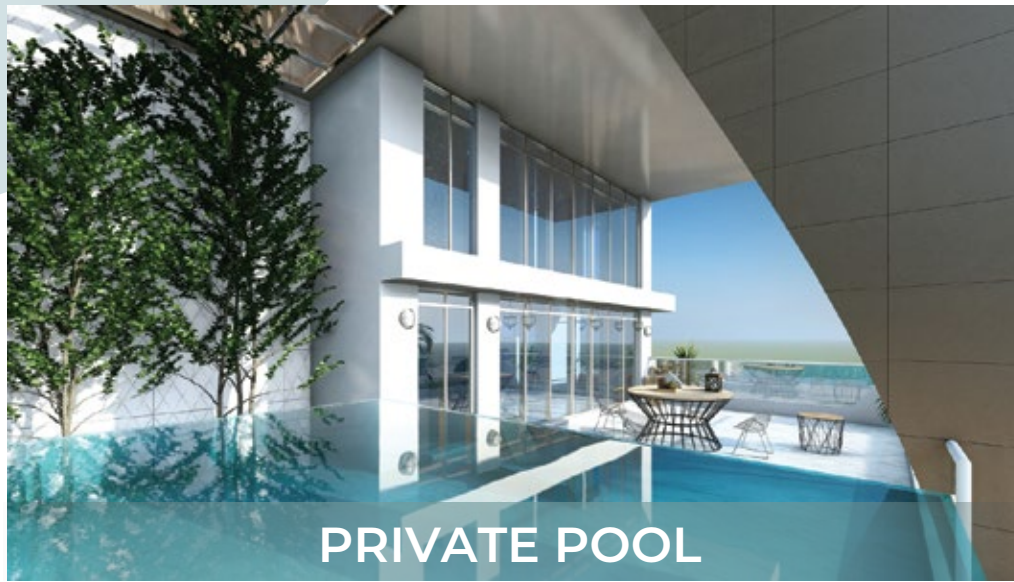
NET AREA

1676 ft<sup>2</sup>



FLOOR PLANS  
AND TYPICAL APARTMENTS

## 2 BEDROOM DUPLEX WITH PRIVATE POOL



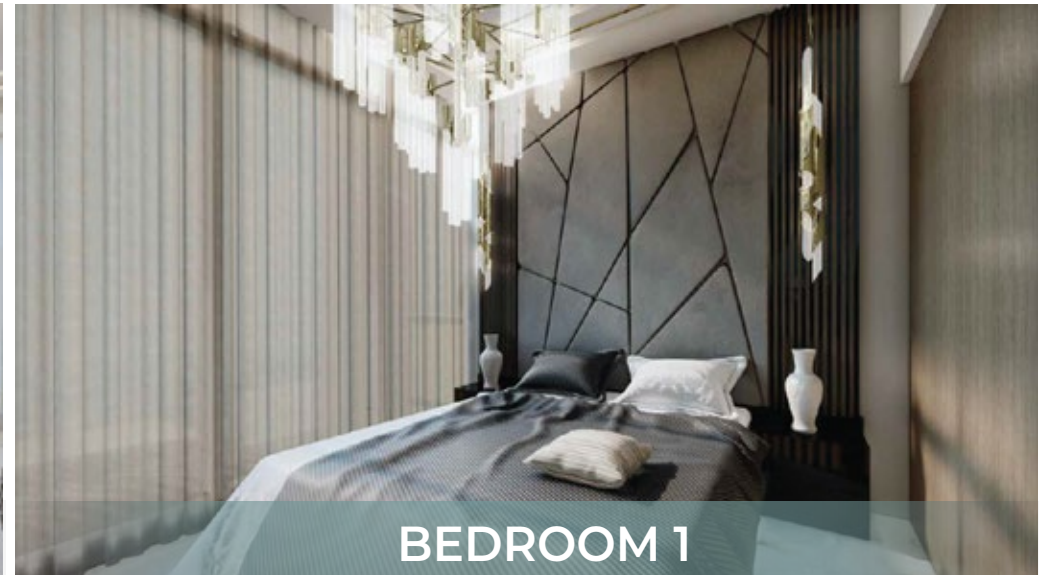
PRIVATE POOL



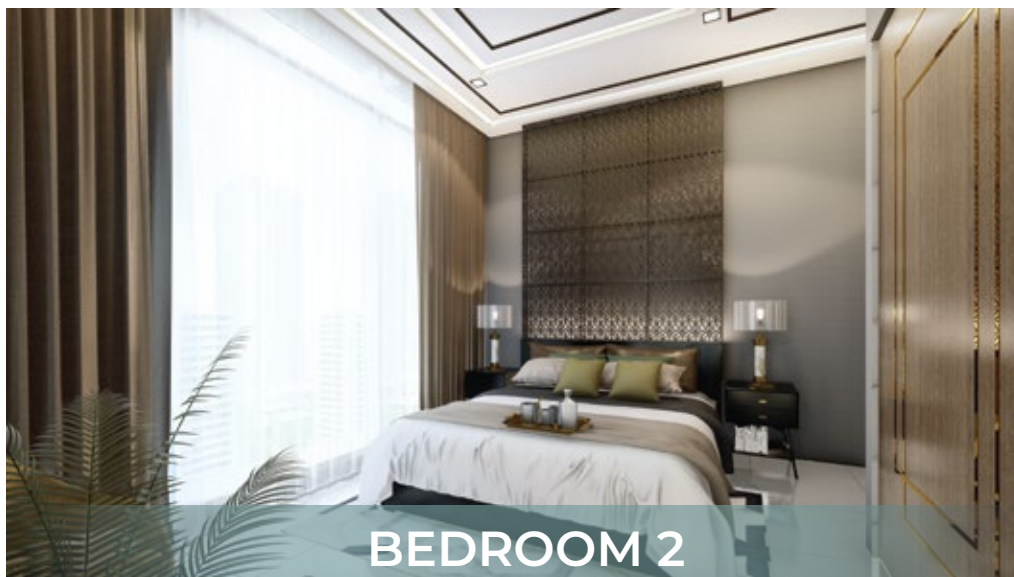
LIVING ROOM



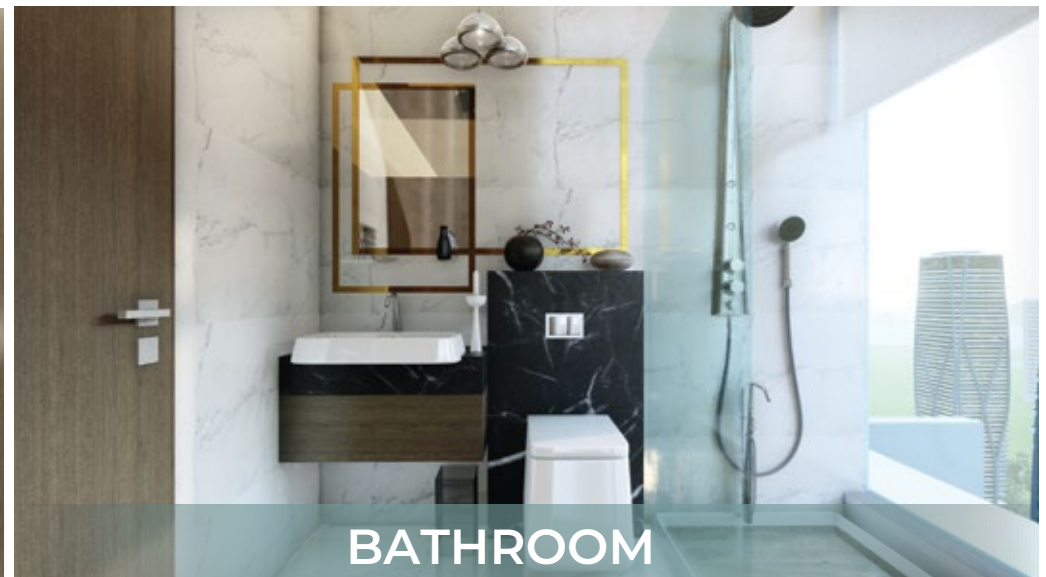
KITCHEN



BEDROOM 1



BEDROOM 2



BATHROOM



REALTY

For more information

Call : +971 50 963 4096

[www.edgerealty.ae](http://www.edgerealty.ae)

Follow Us

