

ELYSIAN
MANSIONS

HILLTOP

A VIEW FROM THE TOP

Distinctive and expertly crafted, the Hilltop residences stand grandly at the peak of Elysian Mansions. Overlooking the whole of the development, the Mansions feature stunning vistas of the impressive estate gardens.

Owners can choose between two distinct material palettes for the exterior and interior, with both the landscaping and interior layouts tailored to your specifications.



Al Fey Road

Hessa Road

TILAL AL GHAF MASTERPLAN



ELYSIAN
MANSIONS

- | | | | | | |
|------------------|-------------------------------|----------------------|-----------------------|---------------------------|------------------------------|
| Sandy Beach | Central Park | Indoor & Outdoor Gym | Children's Play Areas | International School | Daycare |
| Beach Cabanas | 18km Walking & Cycling Trails | Basketball Court | Water Splash Park | Beach Restaurants & Cafés | Holistic Healthcare Facility |
| Beach Volleyball | Table Tennis | Outdoor Cinema | Swimming Pools | Community Town Centre | Mosques |
| Water Sports | Tennis Court | Skate Park | Trampoline Parks | BBQ Stations | Retail Hub |



AN OASIS OF REFINED LIVING

Elysian Mansions is an exclusive, residential waterfront enclave abutting the lagoon of Tilal Al Ghaf. Inspired by the Elysian Fields of Greek mythology, this hallmark luxury neighbourhood conceived by Majid Al Futtain offers the most distinctive and thoughtful residences to date.

These bespoke, expertly crafted mansions are tailored to your tastes, with generous spaces, stunning finishes, and expansive pockets of natural beauty woven throughout the homes.



DISCOVER YOUR PERSONAL PARADISE





QUIETLY SOPHISTICATED

INTIMACY & HOSPITALITY

CRAFTED WITH DISTINCTION

Led by contemporary architecture, yet rooted in classic home design, Elysian Mansions offers smart, technology-enabled homes with uncompromising aesthetics.





KEYPLAN & PUBLIC REALM

01. Main Entrance
02. Promenade
03. The Pavilion
04. Terraced Gardens

Lagoonside

05. The Orchards
06. The Alle
07. The Dining Room
08. The Clock Tower

09. The Kitchen Gardens
10. The Water Gardens
11. Sikka Gardens
12. The Forest Walk

Hilltop

13. The Tuileries
14. The Maze Garden
15. The Grand Lawn
16. The library of trees

Park Lane

17. The Beach Access
18. The Private Beach
19. Stargazing Room
20. Parking Area

21. Informal Lawn
22. Plazas



A BESPOKE SANCTUARY



Grand double height entry



Access to exclusive beach & recreational lagoon



Secured gated community



Luxury marble flooring



Largest exclusive park in
Tilal Al Ghaf



Stone cladded exterior facades



Emphasis on the indoor/outdoor
relationship



Expansive terraces & outdoor
spaces with upgrade options



Triple-height courtyards



Bespoke ergonomic & biophilic
architecture



European kitchens with
integrated appliances



Spacious walk-in closets with
accessorized wardrobes



Car galleries for 6 to 8 cars



Elevator in each mansion



A selection of bespoke
upgrades to suit your needs



Premium wooden flooring in
bedrooms

TAILORED TO YOUR TASTES

A selection of facade palettes, ranging from deep, moody stones to warm textured neutrals, captures the individual grandeur of each mansion—creating a bespoke and private oasis all your own.



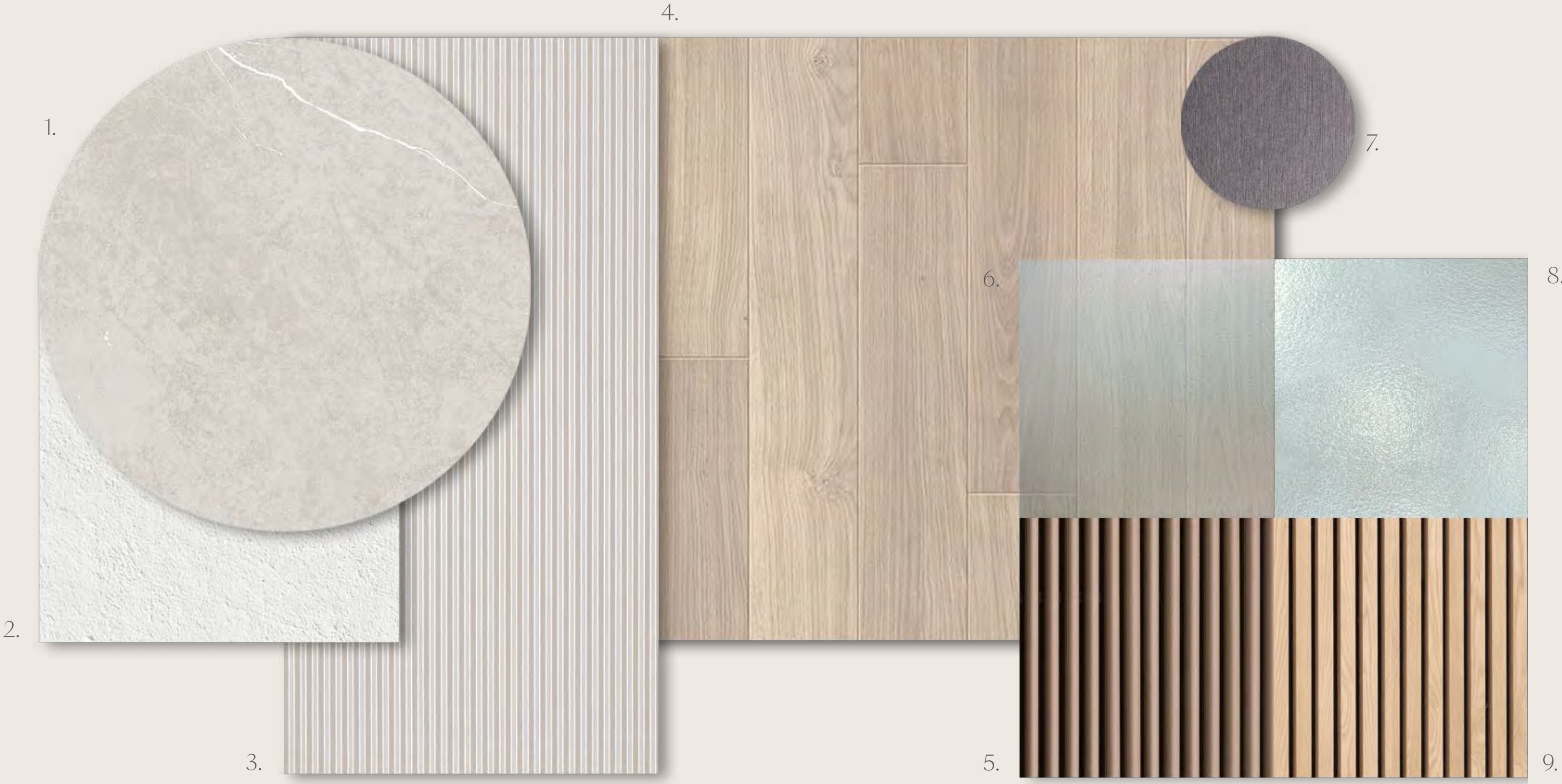
Timeless



Prestige

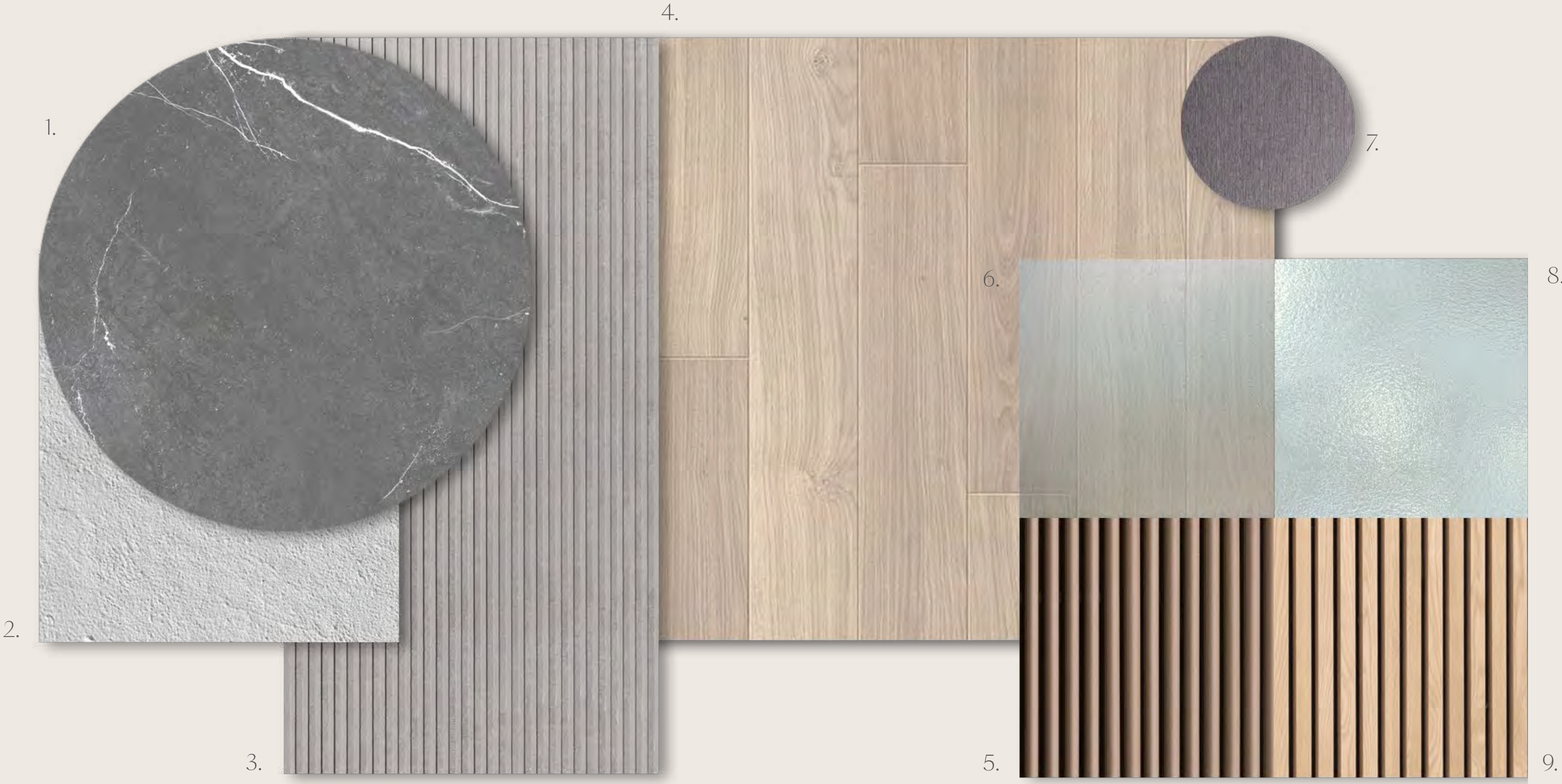
EXTERIOR FACADE MATERIALS TIMELESS

- 1. Stone Cladding
- 2. Render Paint
- 3. Textured Stone Cladding
- 4. Wood Effect Panels
- 5. Wood Effect Shutters
- 6. High Performance Glass
- 7. Metal Sheets
- 8. Glass Balustrade
- 9. Wood Effect Louvers



EXTERIOR FACADE MATERIALS PRESTIGE

- 1. Stone Cladding
- 2. Render Paint
- 3. Textured Stone Cladding
- 4. Wood Effect Panels
- 5. Wood Effect Shutters
- 6. High Performance Glass
- 7. Metal Sheets
- 8. Glass Balustrade
- 9. Wood Effect Louvers



TAILORED TO YOUR TASTES

Inside the homes, a selection of interior palettes features rich, natural materials, including an array of veined marbles, carved timber, and charismatic metals, weave throughout the mansions, bestowing timeless, thoughtful elegance.



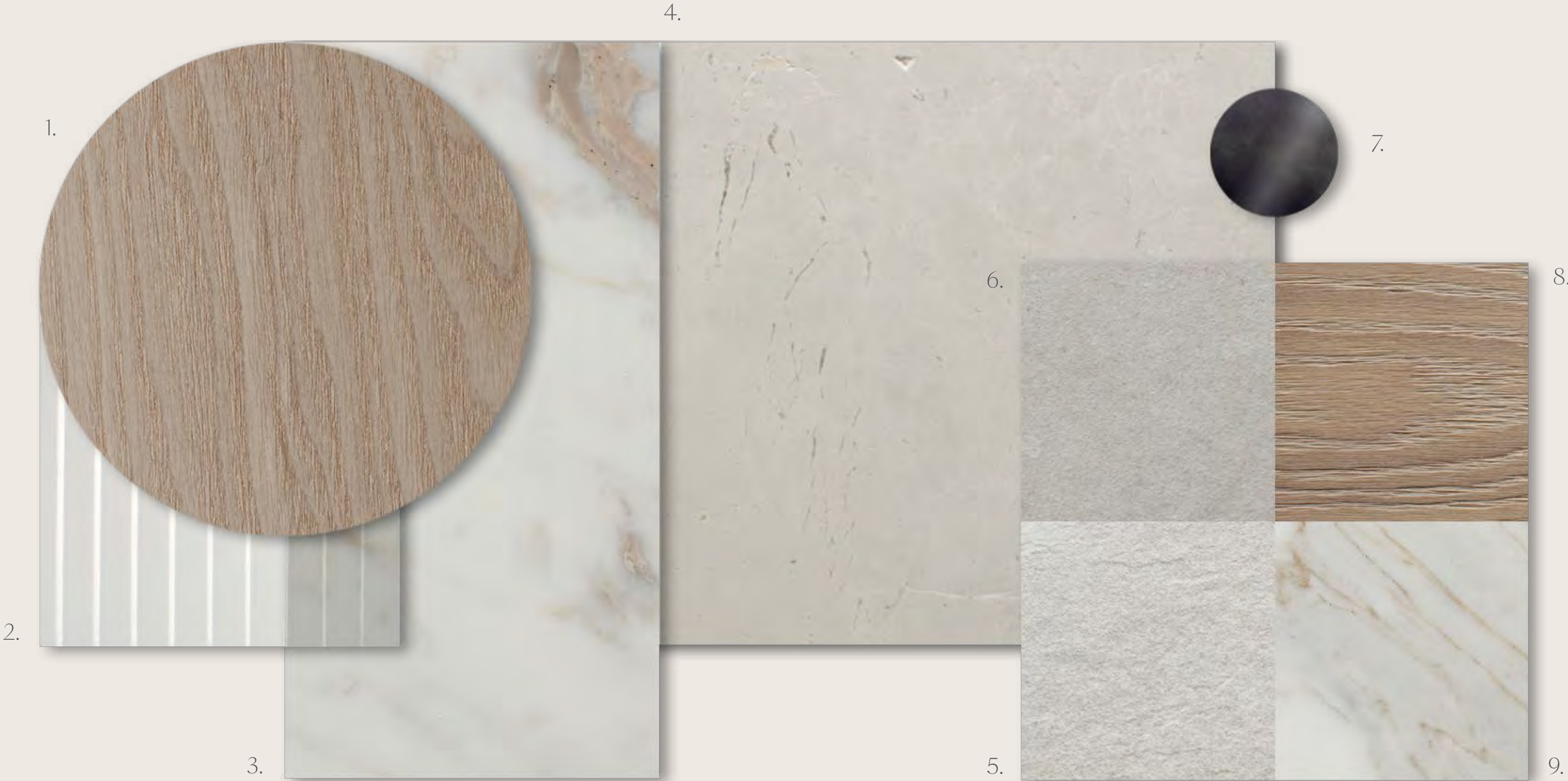
Pearl



Onyx

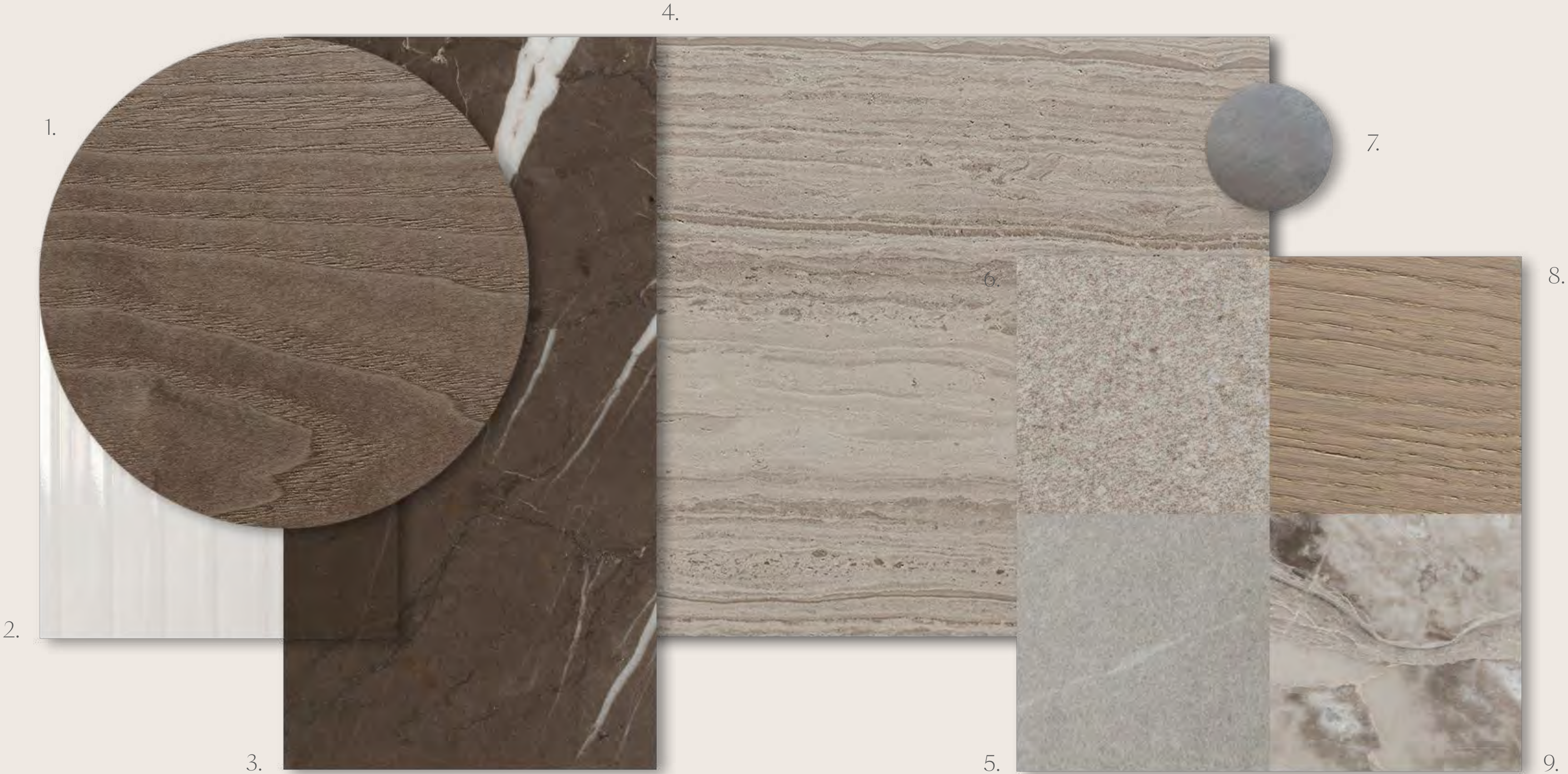
INTERIOR MATERIALS MUSE, ARTIS, LEIA PEARL

- 1. Kitchen and Wardrobe Veneer
- 2. Clear Fluted Glass
- 3. Kitchen Island Marble
- 4. Marble General Flooring and Master Bathroom
- 5. Secondary Bathroom Porcelain Floor Tiles
- 6. Secondary Bathroom Porcelain Wall Tiles
- 7. General Metal Accent
- 8. Bedroom Wood Flooring
- 9. Marble Vanity and Feature Wall



INTERIOR MATERIALS MUSE, ARTIS, LEIA ONYX

- 1. Kitchen and Wardrobe Veneer
- 2. Clear Fluted Glass
- 3. Kitchen Island Marble
- 4. Marble General Flooring and Master Bathroom
- 5. Secondary Bathroom Porcelain Floor Tiles
- 6. Secondary Bathroom Porcelain Wall Tiles
- 7. General Metal Accent
- 8. Bedroom Wood Flooring
- 9. Marble Vanity and Feature Wall



THE COLLECTION

ARTIS











ARTIS

TYPE 1 - HILLTOP

Amenities

- Double Height Entry

Double Height Spaces

Private Home Elevator

Underground Car Gallery
- Formal Living Area

Two Family Living Areas

Show Kitchen

Closed Kitchen
- Butler Space

Guest Suite

Home Office

His & Hers Walk in Closets
- Nanny Room

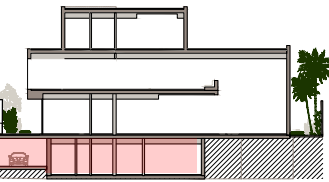
Maid's Room

Driver's Room

Internal Area	1,006 sqm / 10,833 sqft
Balcony/Terrace	298 sqm / 3,204 sqft
Garage	364 sqm / 3,913 sqft
Total Area	1,668 sqm / 17,950 sqft

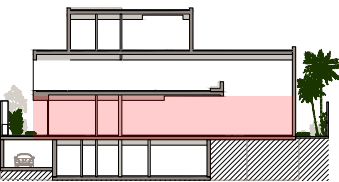
BASEMENT

580 sqm / 6,241 sqft



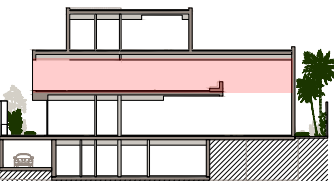
GROUND FLOOR

352 sqm / 3,784 sqft



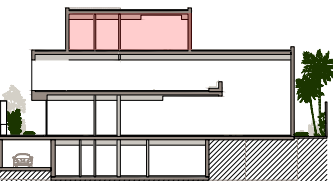
FIRST FLOOR

439 sqm / 4,723 sqft



SECOND FLOOR - ROOFTOP

297 sqm / 3,202 sqft



ARTIS

TYPE 2 - HILLTOP

Amenities

Double Height Entry

Double Height Spaces

Private Home Elevator

Underground Car Gallery

Formal Living Area

Two Family Living Areas

Show Kitchen

Closed Kitchen

Butler Space

Guest Suite

Home Office

His & Hers Walk in Closets

Nanny Room

Driver's Room

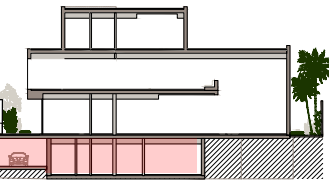
Mega Master Bedroom

Maid's Room

Internal Area	1,006 sqm / 10,833 sqft
Balcony/Terrace	298 sqm / 3,204 sqft
Garage	364 sqm / 3,913 sqft
Total Area	1,668 sqm / 17,950 sqft

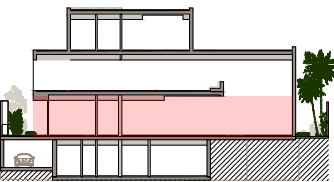
BASEMENT

580 sqm / 6,241 sqft



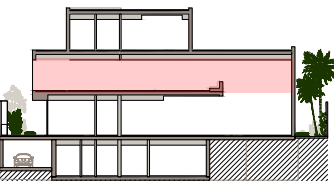
GROUND FLOOR

352 sqm / 3,784 sqft



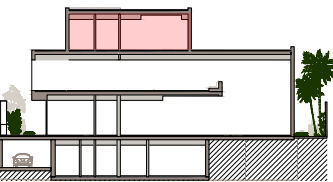
FIRST FLOOR

439 sqm / 4,723 sqft



SECOND FLOOR - ROOFTOP

297 sqm / 3,202 sqft



ARTIS

TYPE 3 - HILLTOP

Amenities

- Double Height Entry

Double Height Spaces

Private Home Elevator

Underground Car Gallery
- Formal Living Area

Two Family Living Areas

Show Kitchen

Closed Kitchen
- Butler Space

Majlis

Home Office

His & Hers Walk in Closets
- Nanny Room

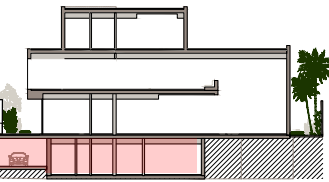
Maid's Room

Driver's Room

Internal Area	1,006 sqm / 10,833 sqft
Balcony/Terrace	298 sqm / 3,204 sqft
Garage	364 sqm / 3,913 sqft
Total Area	1,668 sqm / 17,950 sqft

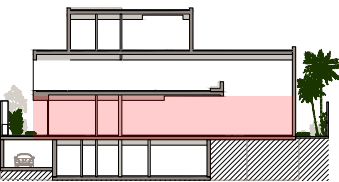
BASEMENT

580 sqm / 6,241 sqft



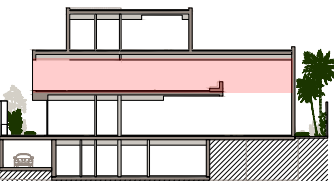
GROUND FLOOR

352 sqm / 3,784 sqft



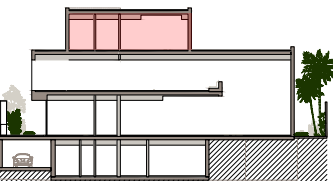
FIRST FLOOR

439 sqm / 4,723 sqft



SECOND FLOOR - ROOFTOP

297 sqm / 3,202 sqft



ARTIS

TYPE 4 - HILLTOP

Amenities

Double Height Entry

Double Height Spaces

Private Home Elevator

Underground Car Gallery

Formal Living Area

Two Family Living Areas

Show Kitchen

Closed Kitchen

Butler Space

Majlis

Home Office

His & Hers Walk in Closets

Nanny Room

Driver's Room

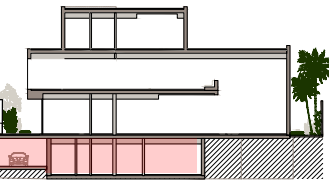
Maid's Room

Mega Master Bedroom

Internal Area	1,006 sqm / 10,833 sqft
Balcony/Terrace	298 sqm / 3,204 sqft
Garage	364 sqm / 3,913 sqft
Total Area	1,668 sqm / 17,950 sqft

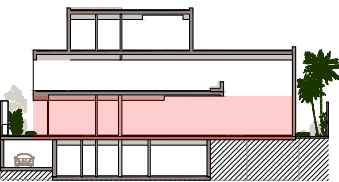
BASEMENT

580 sqm / 6,241 sqft



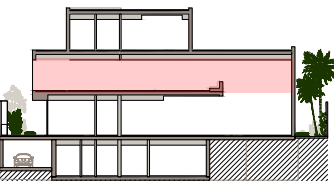
GROUND FLOOR

352 sqm / 3,784 sqft



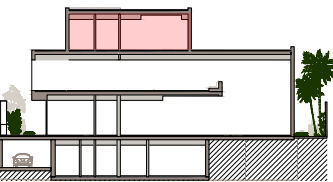
FIRST FLOOR

439 sqm / 4,723 sqft



SECOND FLOOR - ROOFTOP

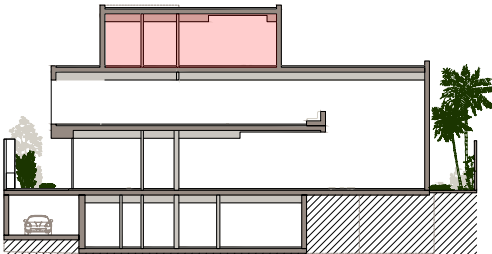
297 sqm / 3,202 sqft



ARTIS

UPGRADES TYPE 1 & 2

ROOF



OPTION 1 - WELL-BEING
297 sqm / 3,202 sqft



OPTION 2 - SKY SUITE
297 sqm / 3,202 sqft



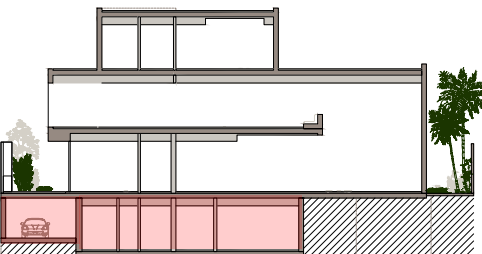
OPTION 3 - ENTERTAINMENT
297 sqm / 3,202 sqft



ARTIS

UPGRADES TYPE 1 & 2

BASEMENT



OPTION 1 - WELL-BEING
580 sqm / 6,241 sqft



OPTION 2 - ENTERTAINMENT
580 sqm / 6,241 sqft















The background of the entire image is a dense, artistic illustration of tropical foliage. It features various types of leaves, including large, dark green monstera leaves with characteristic holes, and long, slender, reddish-brown palm fronds. The colors are rich and saturated, with deep greens, purples, and reds, creating a lush, jungle-like atmosphere.

EDGE

REALTY

For more information

Call : +971 4 388 1856

www.edgerealty.ae

Follow Us

